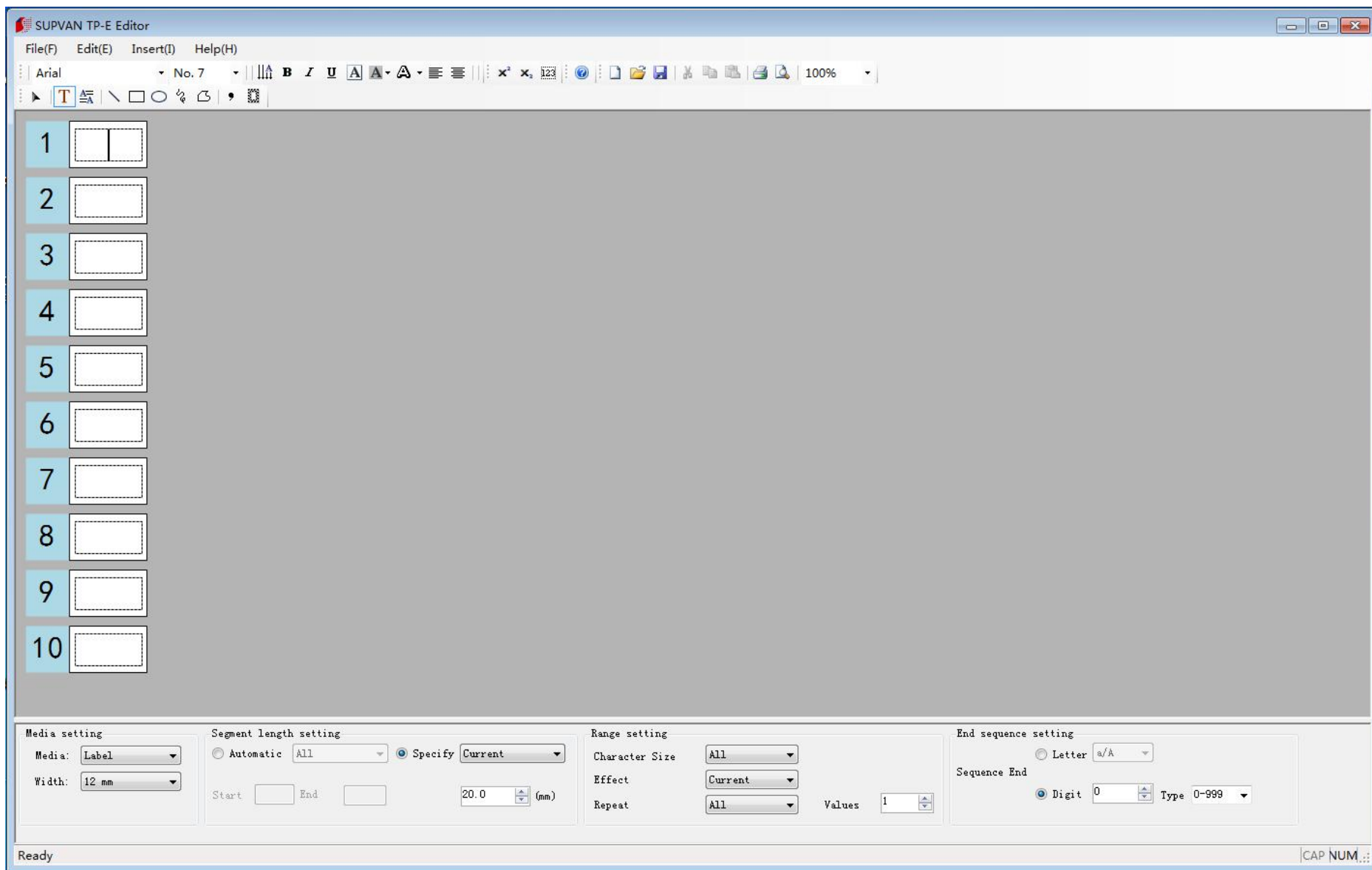


---

# Content

1. How to New、Insert、Delete Segment.....	5
2.How to set Segment Length.....	7
3.How to set “Repeat”.....	9
4.How to set “Sequence”.....	12
5.How to set “Half cut”.....	14
6.How to set “Double Rows”.....	15
7.How to set “Vertical Text”.....	15
8.How to set “Superscript”and”Subscript”.....	15
9.How to set “Import Excel File”.....	16
10.How to change Font after you input data.....	18
11.How to set “Print range”.....	19

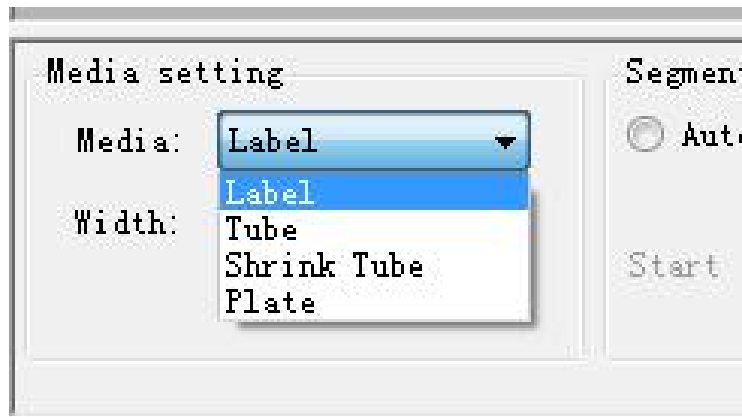
# Supvan Tube Printer Software-TP-E Editor



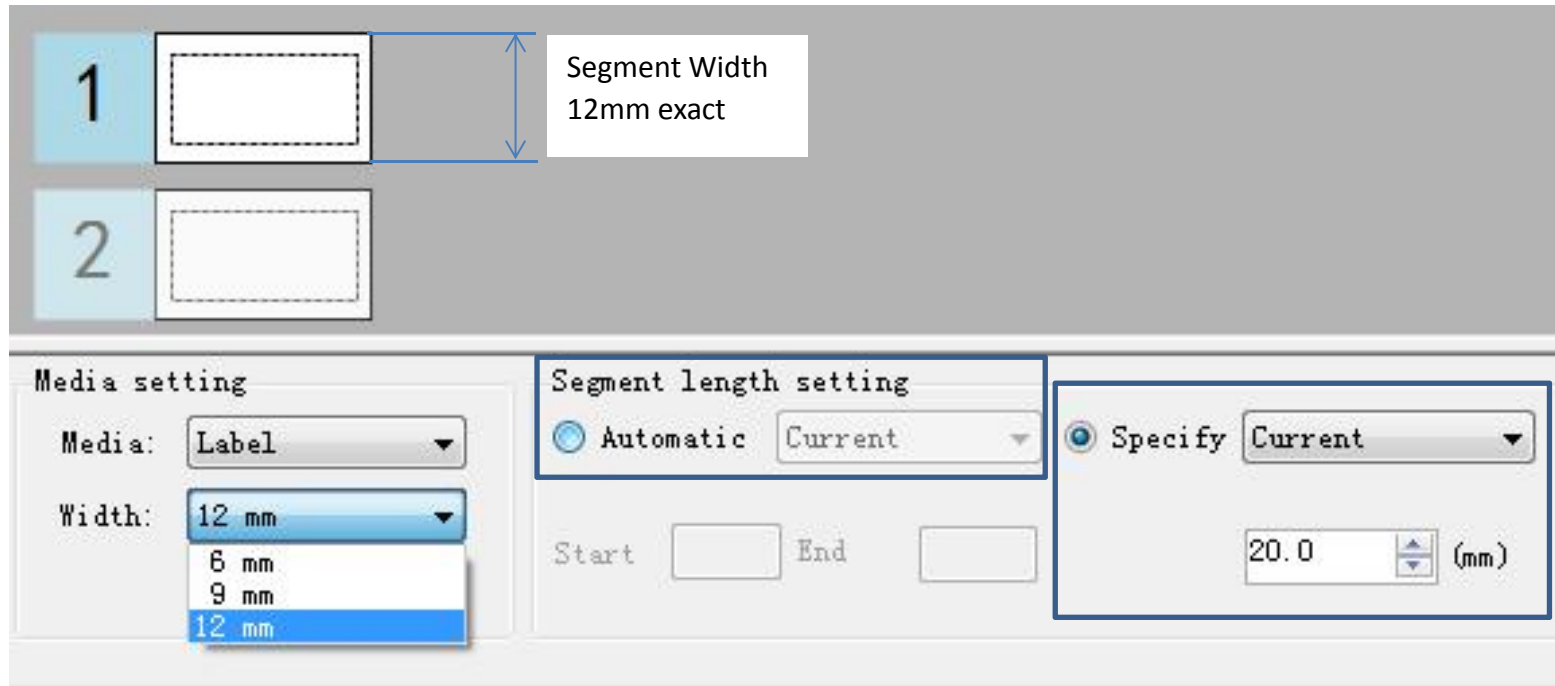
- ◆ Start the software, the interface of the software is like the image above.

## Caution

- ◆ Before using the software, you **MUST** select the media first, by the “Media Setting” at the bottom of the page.

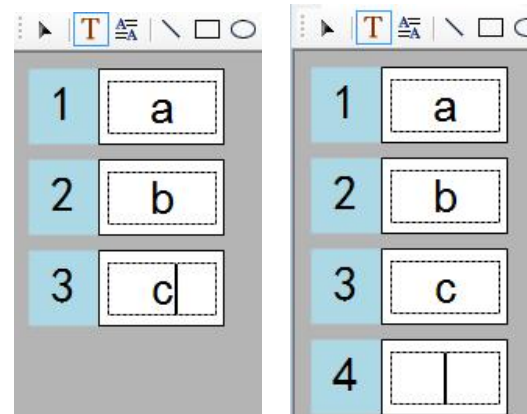


## 1. How to create new, insert, delete a segment



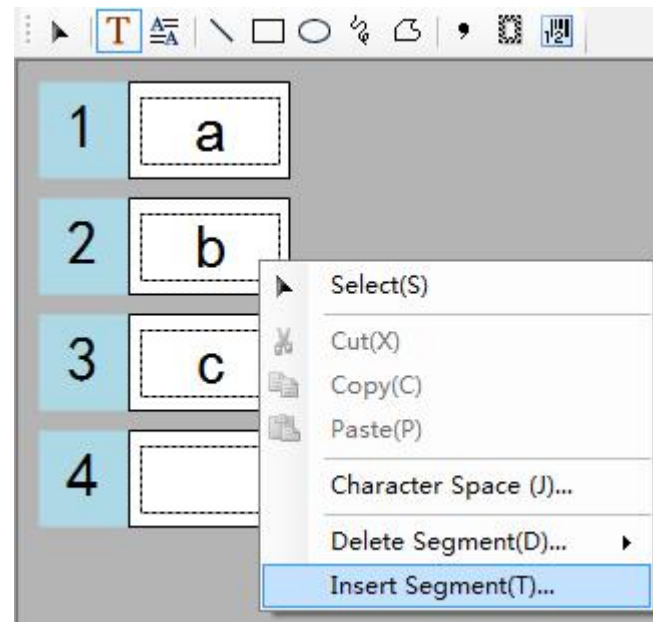
### 1) Create new segment

Press "ENTER" to new segment



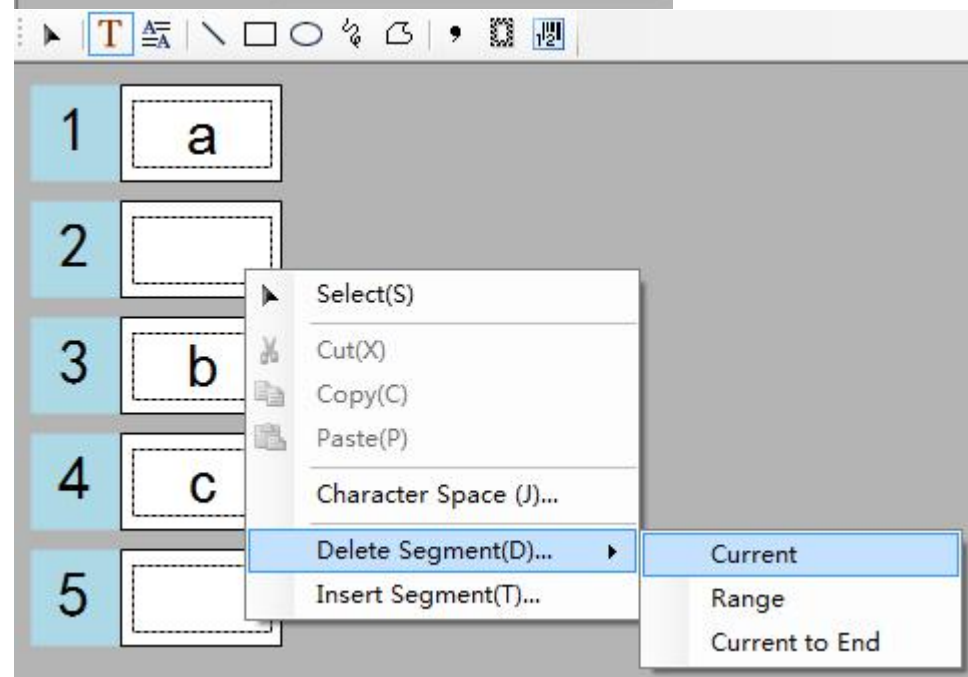
## 2) Insert segment

Right click on the segment

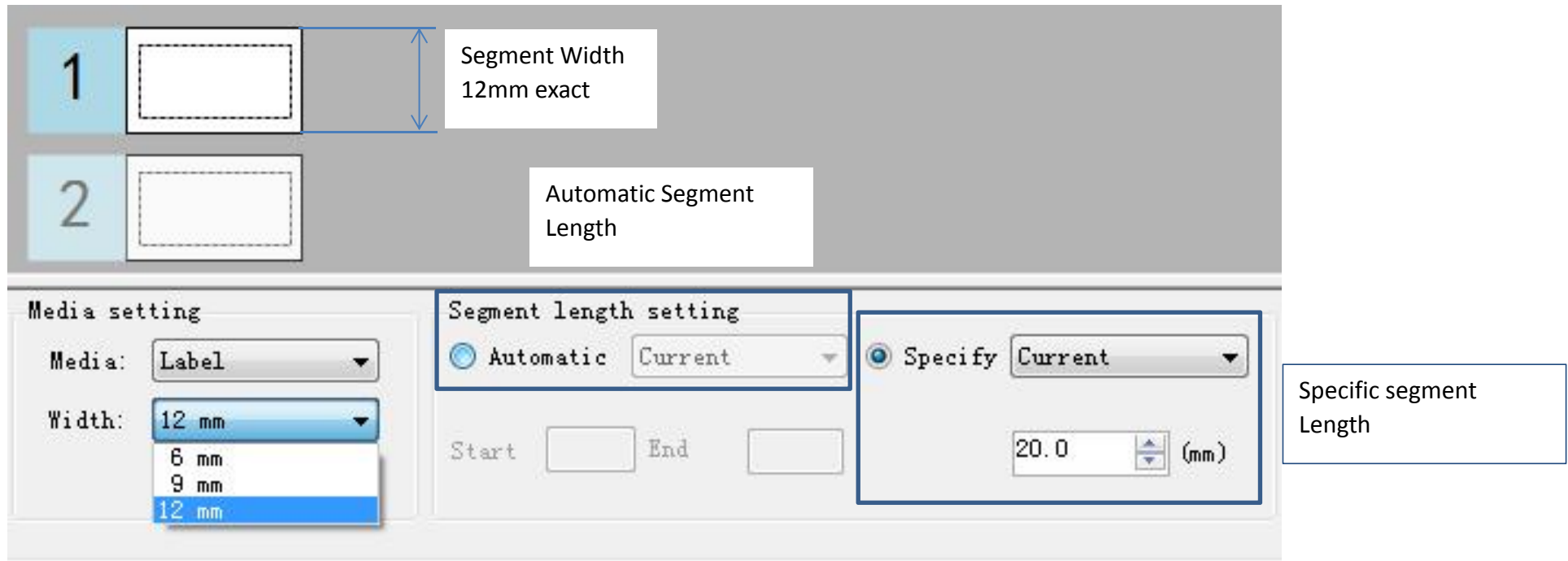


## 3) Delete segment

Right click ,then you will see



## 2.How to set segment length



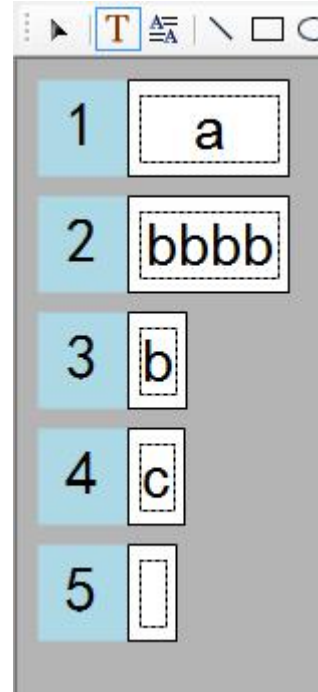
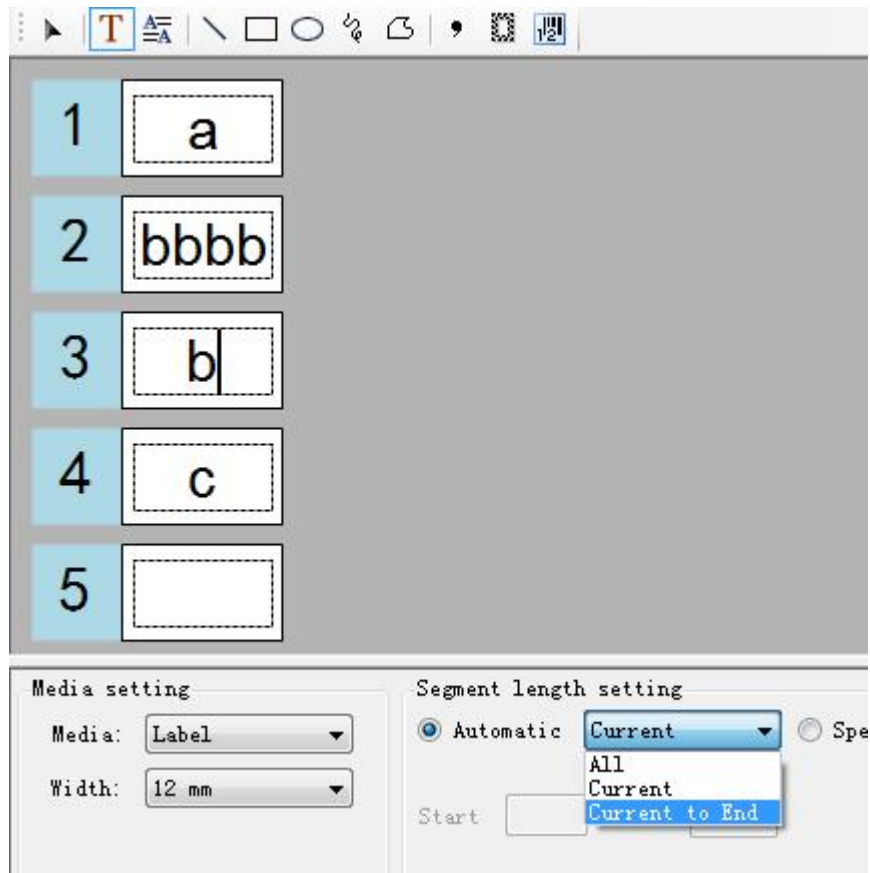
The screenshot shows the software interface for setting segment length. It features two segment examples at the top: Segment 1 is labeled 'Segment Width 12mm exact' with a vertical double-headed arrow indicating its height. Segment 2 is labeled 'Automatic Segment Length'. Below these is a settings panel with two main sections: 'Media setting' and 'Segment length setting'. The 'Media setting' section includes a 'Media' dropdown set to 'Label' and a 'Width' dropdown set to '12 mm', with a list of options (6 mm, 9 mm, 12 mm) visible. The 'Segment length setting' section has two radio buttons: 'Automatic' (selected) and 'Specify'. The 'Specify' option is also selected, with a 'Current' dropdown and a numerical input field set to '20.0 (mm)'. A callout box on the right points to the 'Specify' section with the text 'Specific segment Length'. The 'Start' and 'End' fields are empty.

**Automatic segment length** will adjust the segment length according to the inputting content, min. 6mm upto max. 100mm

**Specific segment** will fix all segment at the same length set in advance.

If the content exceed the max. allowable digit printable on this segment, there will be a warning window pop up as per figure to right





The length of the segments are adjustable, you can put the cursor to the selected segment and choose "Automatic" or "Specify" from the "Segment Length Setting" section to change the segment length.

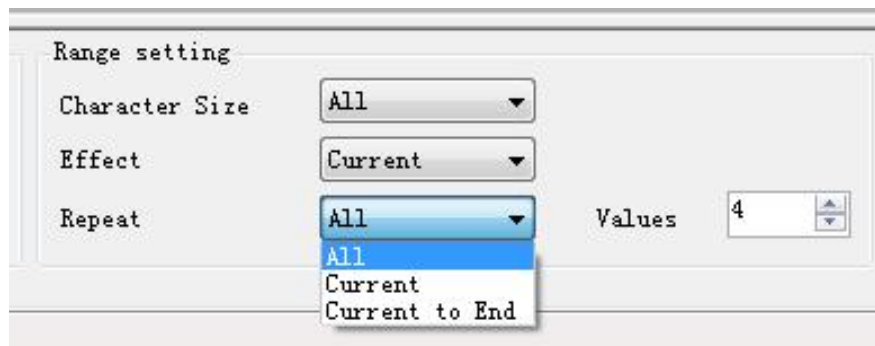
While editing, you have options to apply the setting to "All" "Current" "Current to End" of segments.



### 3.How to set “Repeat”

For example, You already input like the picture to right.

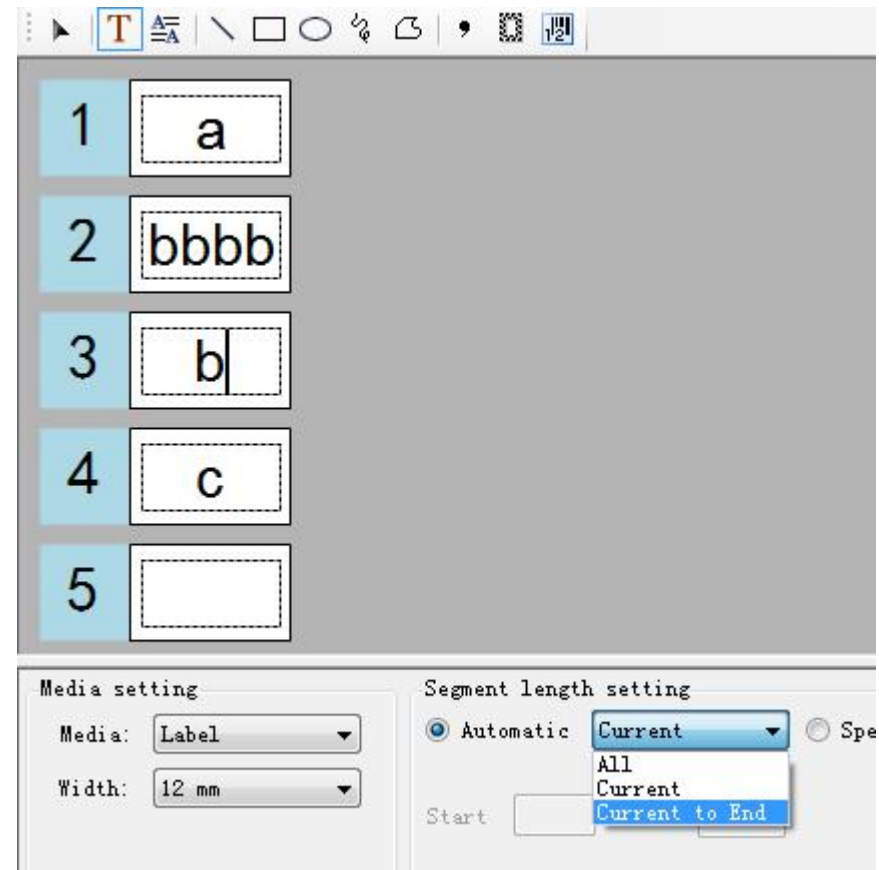
#### A. You want all segment repeat 4 times



Select “Repeat” option to “All”, values put “4”

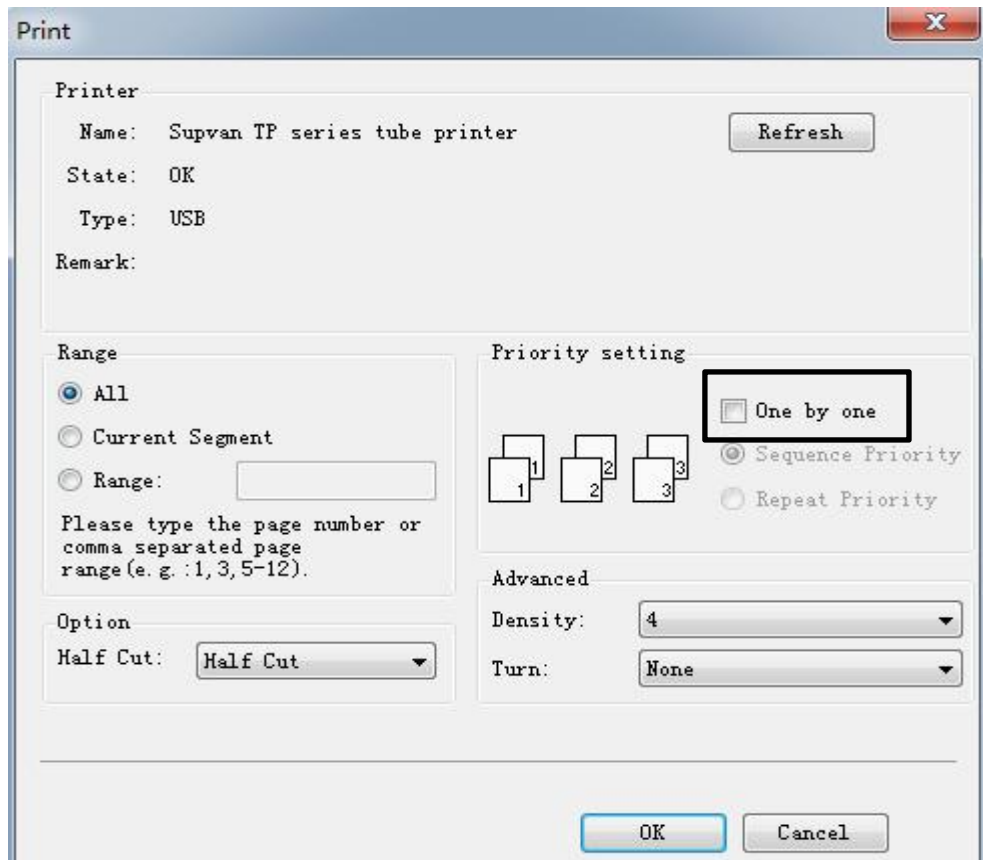
After printing, the sample will be: “a a a a bbbb bbbb bbbb bbbb c c c c d d d d”

In here, there is a question that you might sometime be more interested in printing sample like below:



a bbbb c d a bbbb c d a bbbb c d a bbbb c d.

This can be effected on the printing dialogue window:



You select “One by one”,then it will come out as “a bbbb c d a bbbb c d a bbbb c d a bbbb c d”.

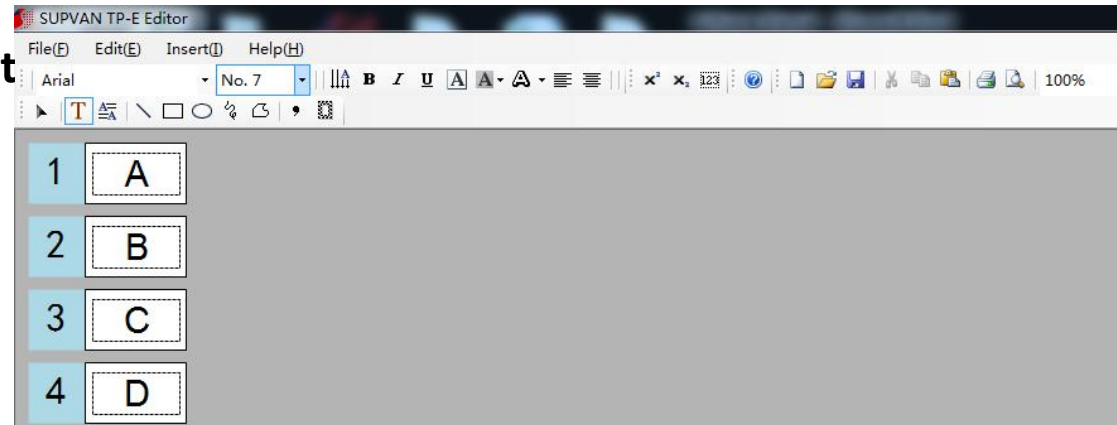
## B.You want different segment repeat different times.

For example: A repeat 4 times

B repeat 3 times

C repeat 2 times

D repeat 5 times



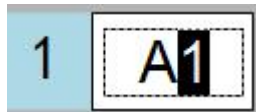
- Put cursor in the first segment, then select repeat range to "current" values:4
- Move the cursor to second segment, Select repeat value:3
- Move the cursor to third segment, Select repeat value:2
- Move the cursor to last segment, Select repeat value:5

## 4.How to set “Sequence”

Maybe you want to print like below:

A1 A2 A3 A4 A5 A6 A7 A8 A9

1) Input “A1”



2) Select “1”

3) Click Sequence button

4) At the “End sequence setting” area, input the finish digit “9”



Another Example:

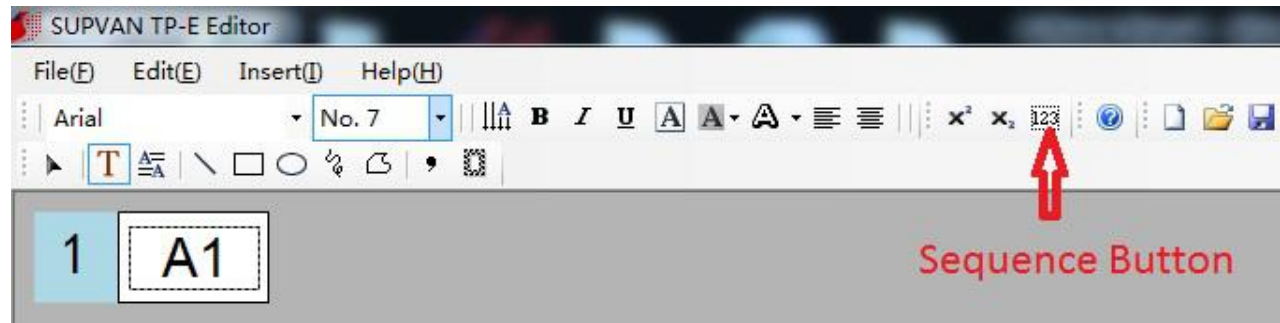
1A 1B 1C 1D 1E 1E 1F 1G 1H

a) Input 1A



b) Select "A"

c) Click Sequence button




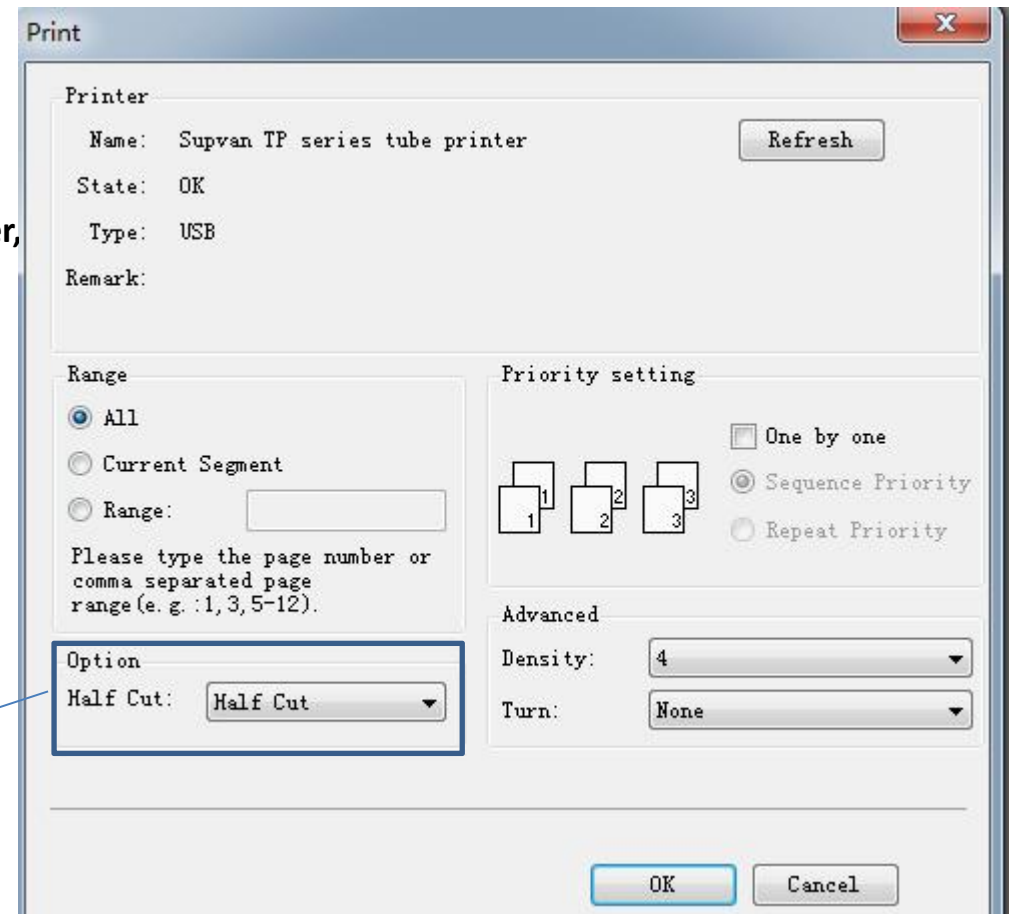
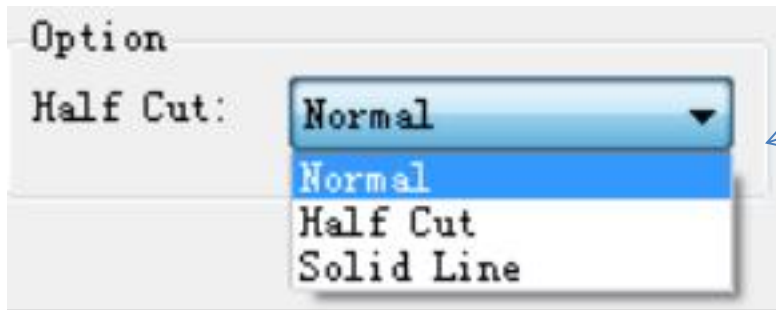
d) At the "End sequence setting" area, select the ending letter "h/H"



## 5.How to set “Half cut”

You know we can set “Half cut”, “Solid line” by the printer,  
this can also be effected on the software

- 1) Click “PRINT”button 
- 2) pop out a dialogue to the right:
- 3) You can set “Half cut”, “Solid line” by Option



## 6.How to set “Double Rows”

**\*\*\*only** 6mm.9mm.12mm label ,  $\Phi 4$ .  $\Phi 6$  tube can set double row, and there will be requirement on the character size as well

a) Click “Double Rows Text”button



b) Input content

## 7.How to set “Vertical Text”

a) Input content

b) Click “Vertical Text”button

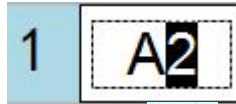


## 8.How to set “Superscript”and”Subscript”

For example, You want to print  $A^2$ .

a) Input A2

b) Select "2"



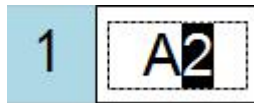
c) Click Superscript button



For example, You want to print A<sub>2</sub>

1) Input A2

2) Select "2"

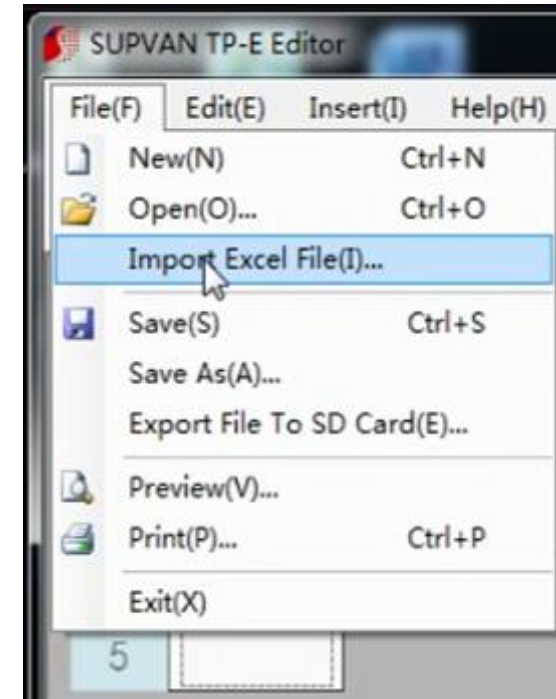


3) Click Subscript button

## 9. How to set "Import Excel File"

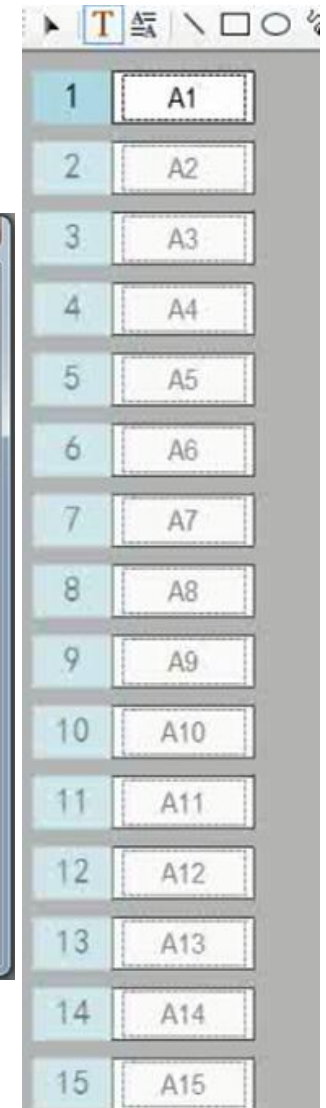
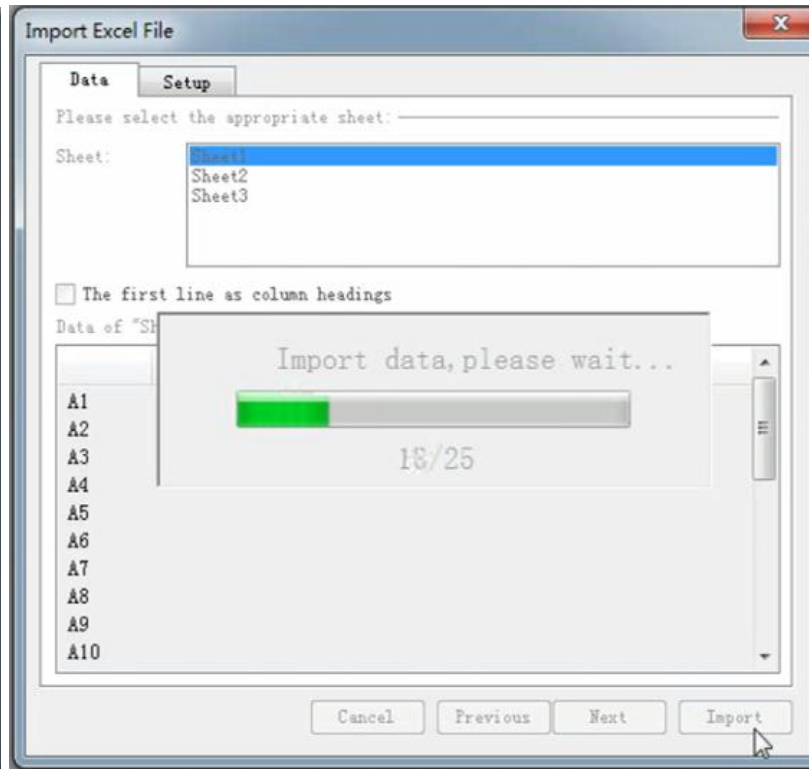
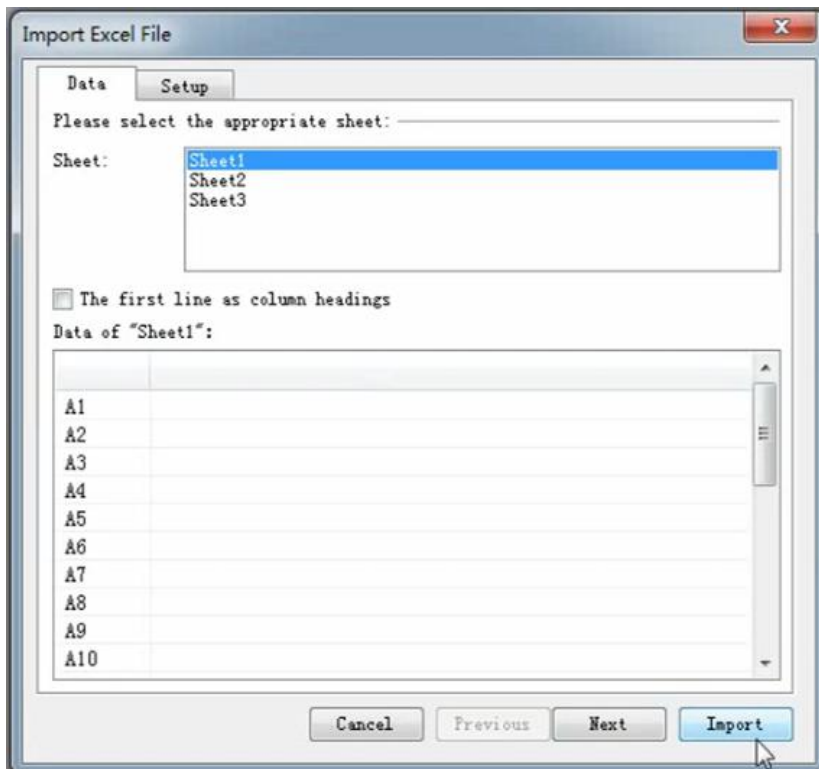
It is possible to directly import data from an excel file into the software.

a) After setting the media and media spec, go to "File" tag and select "Import Excel File"



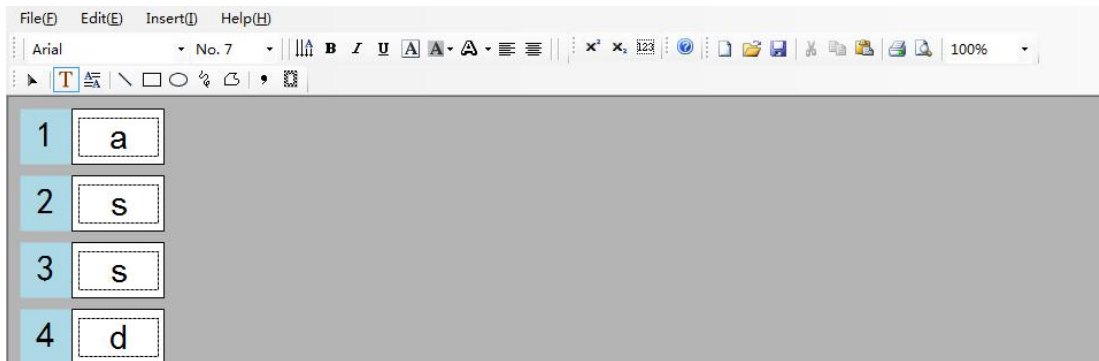


b) Select "Sheet1"—"Import"





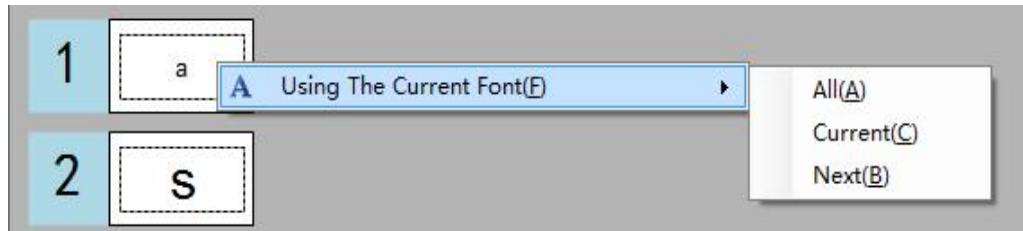
1	A1
2	A2
3	A3
4	A4
5	A5
6	A6
7	A7
8	A8
9	A9
10	A10
11	A11
12	A12
13	A13
14	A14
15	A15

## 10.How to change Font after you input data



You want to change Font to “Arial Black” ,Character size to 3

- 1) Select “a” 
- 2) Change Font to “Arial Black” ,Character size to 3
- 3) Click “Select”button 
- 4) Right click the first segment,then you will see



5) Select “Using The Current Font”—“ALL”

6) All the font will change to Arial black,character size to 3.

## 11.How to set “Print range”

You can select print all segment that you edited. You can select print current segment or select range as well.

